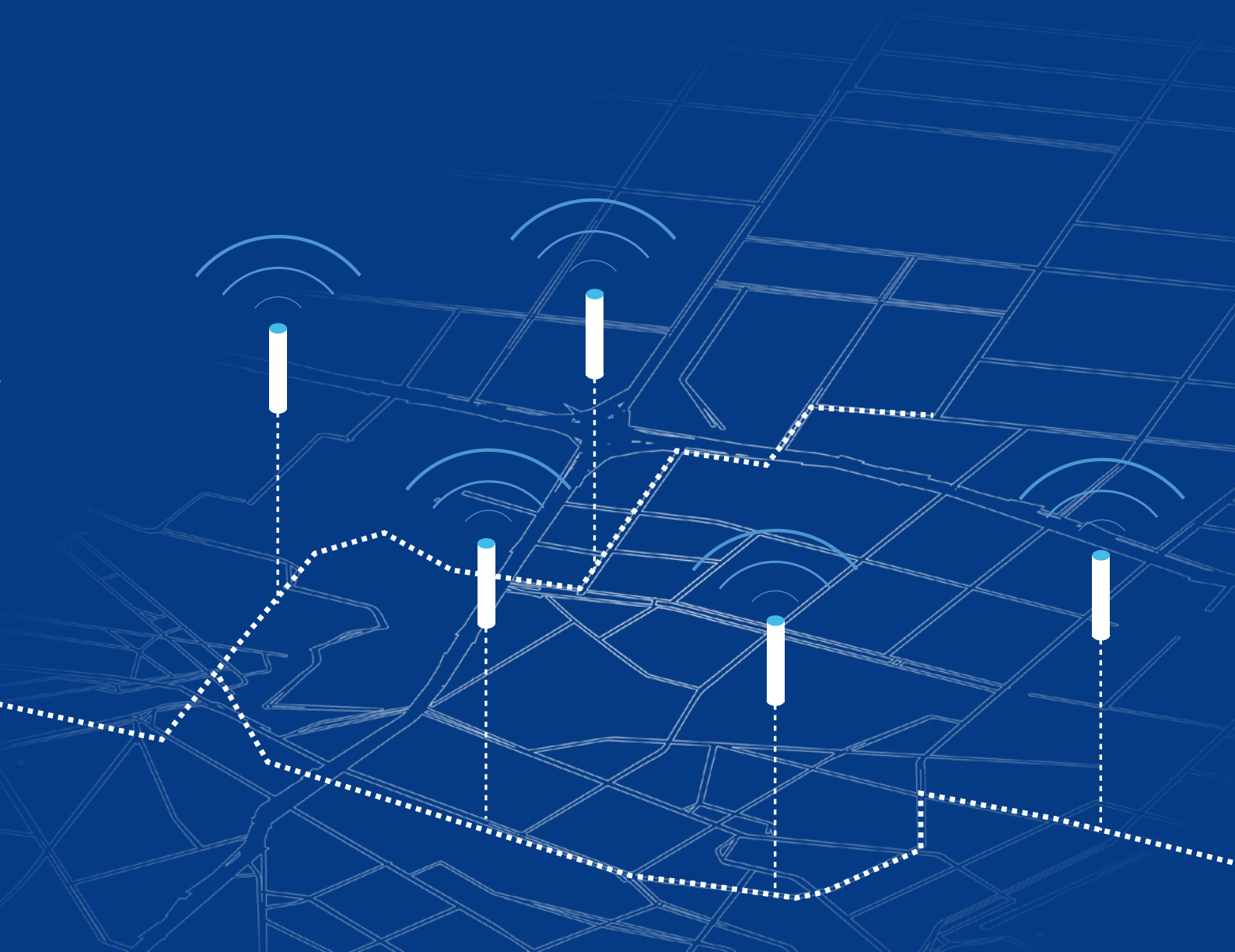




# ELIMINATE BLIND SPOTS AND IMPROVE POTABLE WATER NETWORK OVERSIGHT



SMARTPROBE OPERATIONAL DATA MEASUREMENTS FOR POTABLE WATER NETWORKS



# CONTENT

---

**DEVELOP A CLEAR PICTURE OF YOUR POTABLE WATER NETWORK** 4

---

**LEVERAGE VALUABLE DATA INSIGHTS TO PROTECT YOUR WATER SUPPLY** 6

---

**UNPARALLELED USER EXPERIENCE** 8

---

**MAXIMIZE SERVICE QUALITY WITH MINIMAL EFFORT** 10

---

**SMARTPROBE OPERATIONAL DATA MEASUREMENTS** 3

# DEVELOP A CLEAR PICTURE OF YOUR POTABLE WATER NETWORK

Create insightful databases for monitoring distribution in your drinking water network with the PIPELIFE SmartProbe. The water monitoring device was developed in collaboration with public utilities to help you maintain a safe and consistent service by eliminating blind spots in your network. Our wide range of plug-and-play sensors can be easily exchanged above ground and provide a comprehensive network overview without installation or maintenance disruption.

Avoid costly diversions or structures by installing our compact, modular device on pipes located in non-trafficable areas. A greater number of sensors, measuring pressure, temperature, pH, conductivity and turbidity, establish a complete picture of your network from which optimal operation and maintenance decisions can be executed.

Water monitoring technology is advancing every day and we have ensured our device remains fit for the future with a compatible design that accommodates the sensors of today and tomorrow.





# LEVERAGE VALUABLE DATA INSIGHTS TO PROTECT YOUR WATER SUPPLY



## SUITABLE FOR LARGE-SCALE DEPLOYMENT ACROSS YOUR PIPE NETWORK

### AVOID ADDITIONAL MAINTENANCE COSTS BY ADDRESSING LEAKS EARLIER

Greater monitoring coverage throughout your network can help you discover new leaks that often go unnoticed. Act preemptively and address pipe fractures before they become major issues that disrupt your distribution.

### ELIMINATE BLIND SPOTS AND ENJOY COMPREHENSIVE OVERSIGHT

The PIPELIFE SmartProbe is compact and battery-powered to provide positional freedom within non-trafficable zones. With sufficient data collection points, you can eliminate blind spots and form a clearer picture of how your network is functioning.



## THOUGHTFUL AND ENDURING PRODUCT DESIGN

### BENEFIT FROM EFFORTLESS INSTALLATION AND MAINTENANCE

Our smart water monitoring devices are fast and easy to install directly onto the pipe in 1.5 to 3 hours. Installation can be carried out without interrupting the water supply or risking contamination. Once installed, you can service or exchange sensors with easy access from the ground level.

### REMAIN VERSATILE TO FUTURE MEASUREMENT REQUIREMENTS

PIPELIFE's modular SmartProbe has been designed for long-term adaptability. As measurement requirements change, our device will endure with plug-and-play sensors that are easily replaced. By installing our water monitoring devices now, you can remain responsive no matter what the future holds.





# UNPARALLELED USER EXPERIENCE

While our smart water monitoring devices can be seamlessly integrated into preexisting third-party systems, we also offer a comprehensive smart service via the PIPELIFE SmartHub.

## STAY ON TOP OF YOUR NETWORK ANYTIME, ANY PLACE

Configure your smart devices and track water network data at your convenience with remote system monitoring in our cloud-based SmartHub interface. Available via browser or app (iOS, Android), SmartHub provides a complete picture of your network through data visualization graphs and diagrams.

## IMPROVE DECISION-MAKING

With SmartHub's intuitive visualization, you can make more informed decisions and utilize your rich dataset to predict events through Big Data, analytical models and machine learning.

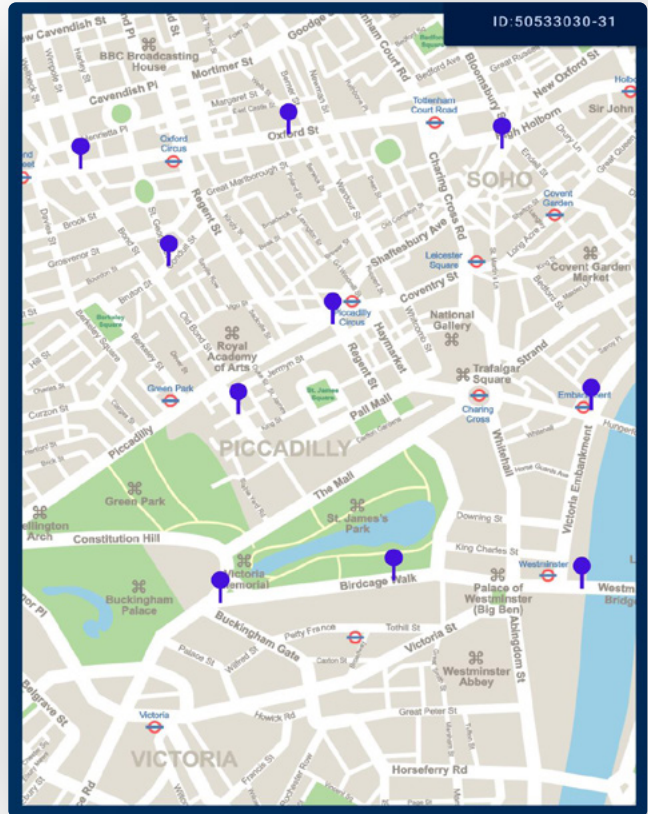
## TAKE ADVANTAGE OF PERSONALIZED SYSTEM SETTINGS

Configure your devices to monitor issues that are relevant to the specific vulnerabilities of your network with custom-threshold alarms and predictive modeling.



# VALUABLE INSIGHTS

- + Compare collected data against hydraulic model
- + Monitor distribution throughout your network
- + Discover fluctuations in water quality
- + Detect and localize leakages earlier
- + Benefit from predictive maintenance
- + Improve pressure and flow management with additional data points



# DISCERNIBLE DATA

The SmartProbe accommodates a wide array of sensors for collecting accurate data, including:

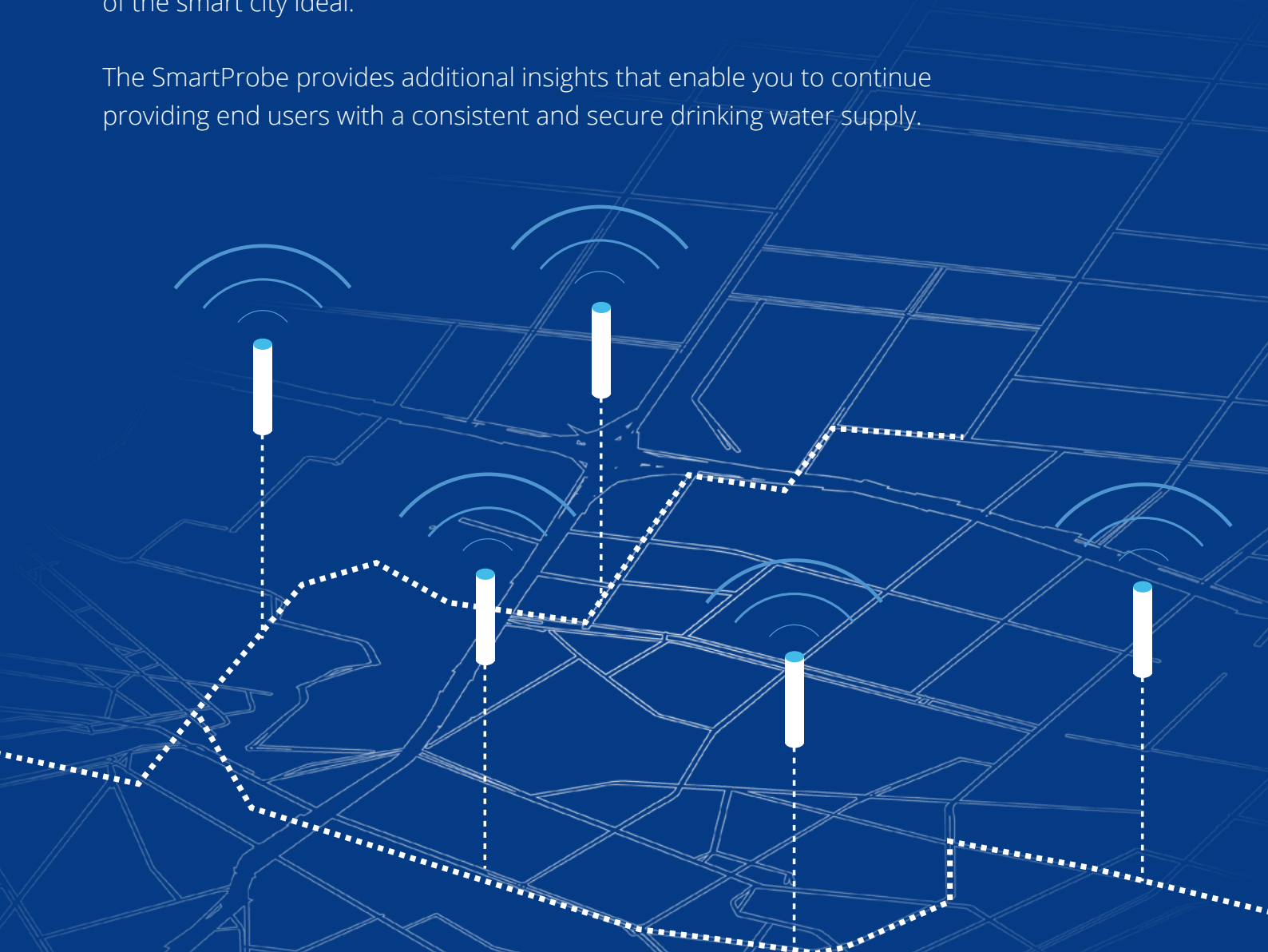
- + Pressure + temperature
- + Conductivity + temperature
- + Temperature
- + pH + oxidation-reduction potential + temperature
- + Turbidity
- + Flow speed and direction (coming soon)

---

# MAXIMIZE SERVICE QUALITY WITH MINIMAL EFFORT

PIPELIFE's smart water monitoring device speaks to an ever-growing demand for smart city infrastructure. Throughout Europe, municipalities are improving their residents' quality of life through the use of innovative technologies. A safe and reliable water supply is integral to this ambition and positions smart water network monitoring at the heart of the smart city ideal.

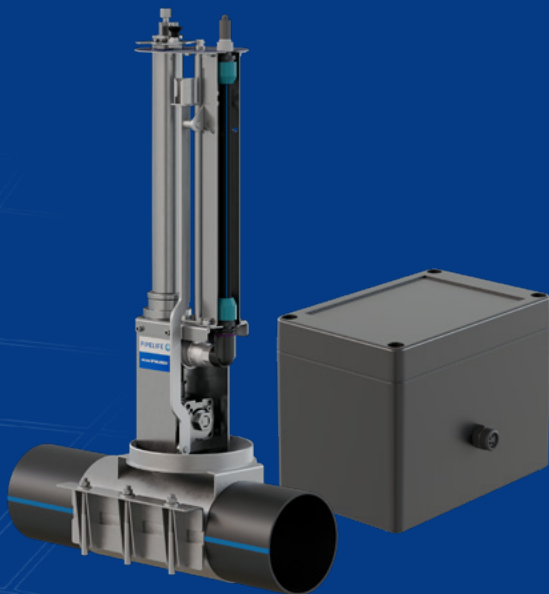
The SmartProbe provides additional insights that enable you to continue providing end users with a consistent and secure drinking water supply.





## SOFTWARE

- + Seamless integration into existing third-party systems
- + Key measurements, data visuals and device configurations are available in PIPELIFE's SmartHub
- + Access to SmartHub is secured with two-factor authentication
- + SmartHub is available via web browser or smart device app (iOS, Android)



## DEVICE AND HARDWARE

- + PIPELIFE's smart water monitoring devices are suitable for all commonly used pipe diameters, materials and installation depths
- + Easily exchangeable sensors cover your custom data requirements and facilitate stress-free maintenance measures
- + The battery-powered PIPELIFE Edge controller securely transmits data to SmartHub

## CONNECTION TO SMARTHUB

- + Our smart water monitoring device connects to SmartHub via wireless LoRa and NB IoT\* technology
- + SmartHub can also accommodate third-party system integration and data validation

\*Coming soon

+ **LORA**  
+ **NB-IoT**



The contents and information contained in this brochure are intended for general marketing purposes only and shall not be relied upon by any person as complete or accurate. In particular, this brochure cannot replace proper expert advice on the characteristics of the products, their usage, suitability for any intended purpose, or the proper processing method. All contributions and illustrations in this brochure are subject to copyright. Unless explicitly otherwise stated, the repetition of content is not permitted. The use of photocopies from this brochure is for private and non-commercial use only. Any duplication or distribution for professional purposes is strictly forbidden. Non-Liability: PIPELIFE has established this brochure to the best of its knowledge. PIPELIFE cannot accept any liability suffered or incurred by any person resulting from or in connection with any reliance on the content of or the information contained in this brochure. This limitation applies to all loss or damage of any kind, including but not limited to direct or indirect damages, consequential or punitive damages, frustrated expenses, lost profit or loss of business.